



## 11 The Dale, Headington, Oxford, OX3 8AT

£1,550 PCM - 7th February 2026

- Duplex Apartment
- Gas CH
- Council Tax Band C
- Two double bedrooms
- Parking for 1 car
- EPC rating C
- Very spacious
- Furnished
- Mains gas and electricity

# 11 The Dale, Oxford OX3 8AT

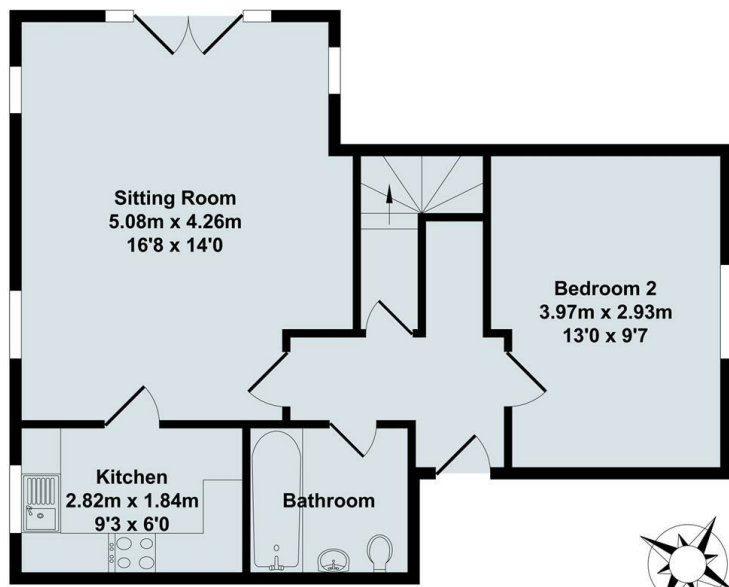
Extremely spacious two double bedroom Duplex apartment within walking distance of buses for London, Oxford City Centre and the Headington Hospitals. Available furnished. Parking for 1 car. Two bedrooms, Bathroom with shower over, Living/Dining room with Juliette balcony, Fully fitted Kitchen with appliances, Gas CH. Allocated parking for 1 car. NOTE: Photos taken prior to start of current tenancy



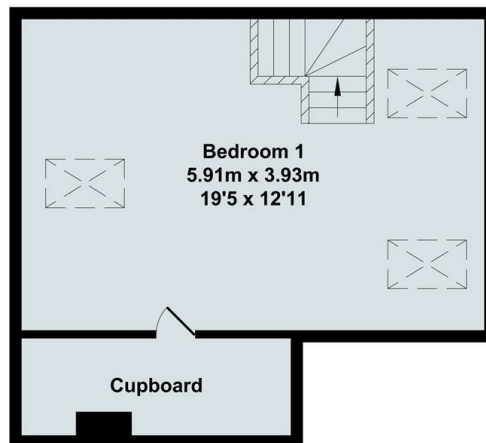
Council Tax Band: C



Extremely spacious two bedroom Duplex apartment within walking distance of buses for London, Oxford City Centre and the Headington Hospitals. Fully furnished. Large top floor bedroom with velux windows and large storage cupboard. Further double bedroom, Bathroom with shower over, Living/Dining room with French doors/Juliette Balcony, Fully fitted Kitchen with electric oven, gas hob, fridge/freezer, washing machine and dryer, Gas central heating, Parking for 1 car (adjacent to steps).

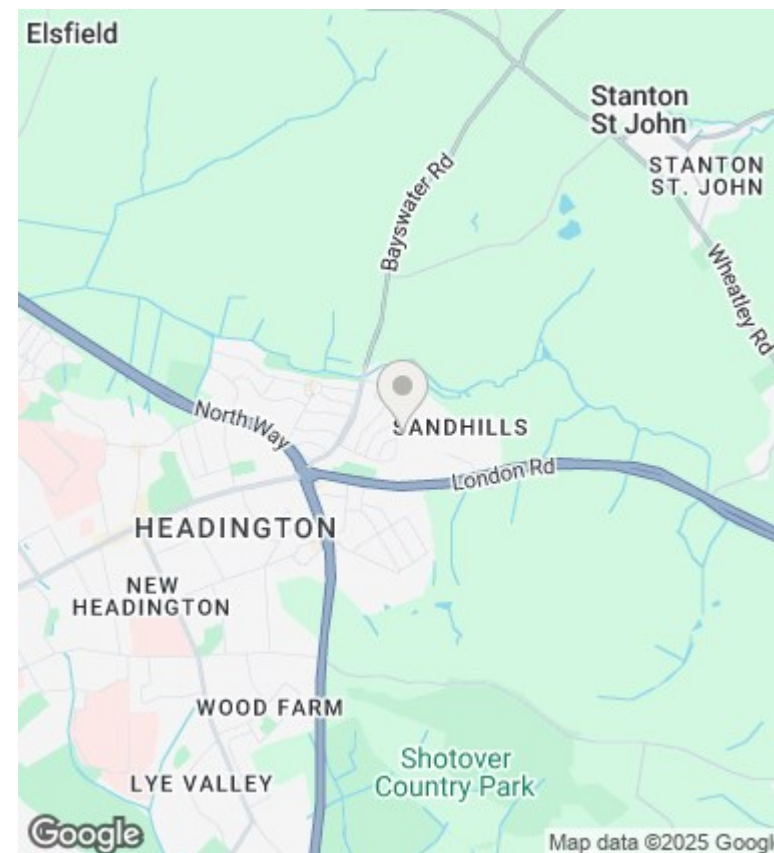


Ground Floor  
Approx. Floor  
Area 48.72 Sq.M.  
(524 Sq.Ft.)



First Floor  
Approx. Floor  
Area 28.07 Sq.M.  
(302 Sq.Ft.)

Total Approx. Floor Area 76.79 Sq.M. (827 Sq.Ft.)



## Directions

## Viewings

Viewings by arrangement only. Call 01865 515900 to make an appointment.

## Council Tax Band

C

Energy Efficiency Rating		
	Current	Potential
Very energy efficient - lower running costs		
(92-plus) <b>A</b>		
(81-91) <b>B</b>		
(69-80) <b>C</b>	74	75
(55-68) <b>D</b>		
(39-54) <b>E</b>		
(21-38) <b>F</b>		
(1-20) <b>G</b>		
Not energy efficient - higher running costs		
EU Directive 2002/91/EC		
England & Wales		